



GAT MONTHLY MEMBERSHIP PROGRESS REPORT

Results as of: 5/31/2023

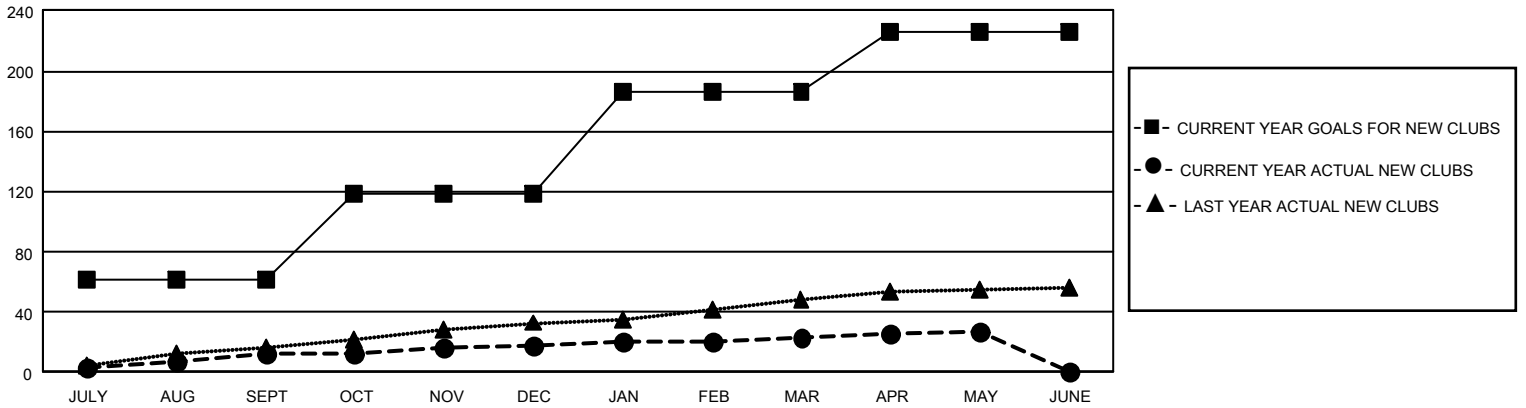
GAT Constitutional Area 5 - Korea

REPORT DOES NOT INCLUDE CLUBS IN UNDISTRICTED AREAS.

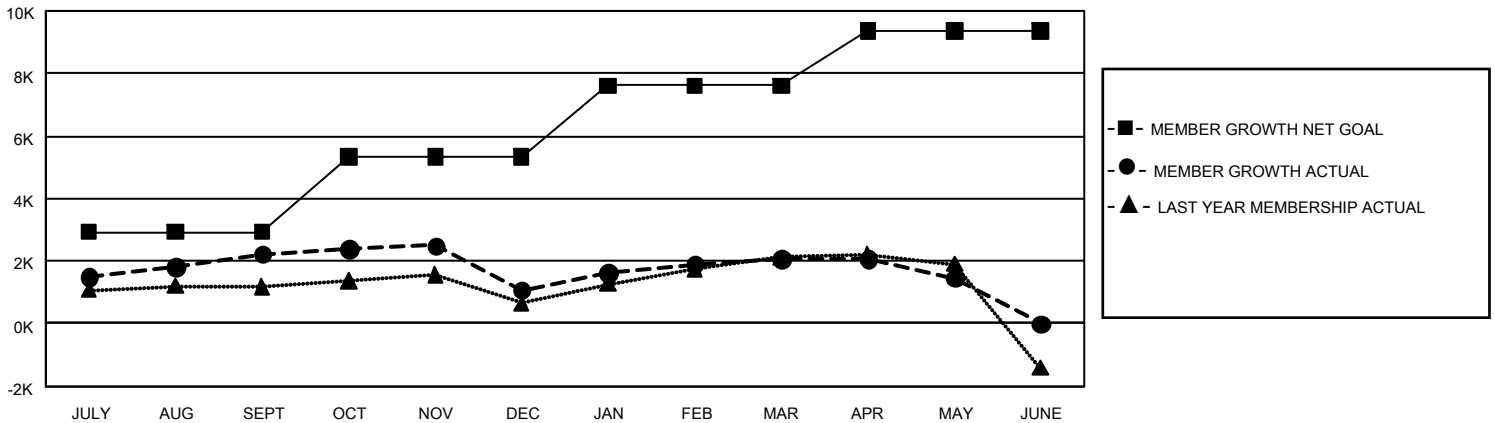
| Clubs | | | |
|-----------------------|---------------|-----------|---------------|
| RESULTS FOR 2022-2023 | | | |
| QUARTER | NEW CLUB GOAL | NEW CLUBS | DROPPED CLUBS |
| JULY/AUG/SEPT | 183 | 12 | 12 |
| OCT/NOV/DEC | 174 | 6 | 16 |
| JAN/FEB/MAR | 201 | 5 | 8 |
| APR/MAY/JUNE | 120 | 4 | 0 |

| Members | | | |
|-----------------------|------------------------|----------------------|--|
| RESULTS FOR 2022-2023 | | | |
| QUARTER | MEMBER GROWTH NET GOAL | MEMBER GROWTH ACTUAL | DROPPED MEMBERS ACTUAL (including transfers) |
| JULY/AUG/SEPT | 2925 | 4,708 | 2,305 |
| OCT/NOV/DEC | 2400 | 2,024 | 3,117 |
| JAN/FEB/MAR | 2293 | 2,552 | 1,429 |
| APR/MAY/JUNE | 1738 | 910 | 1,459 |

GOALS AND ACTUAL NEW CLUBS CUMULATIVE



GOALS AND ACTUAL MEMBERS CUMULATIVE



| | |
|------------------------|--------------|
| DROPPED CLUBS: 36 | |
| DROPPED MEMBERS | |
| DECEASED | 246 |
| CLUB CANCELLED | 373 |
| OTHER | 7,691 |
| TOTAL | 8,310 |

1,592 CLUBS OF 2,064 ADDED 1 OR MORE NEW MEMBERS

[CLICK HERE FOR CUMULATIVE MEMBERSHIP DATA](#)

| GENDER DISTRIBUTION | |
|--|-----------------|
| MALE | 54,664 (74.16%) |
| FEMALE | 19,045 (25.84%) |
| NON BINARY | 0 (0.00%) |
| PREFER NOT TO ANSWER | 0 (0.00%) |
| TOTAL FAMILY UNIT MEMBERS | 4,587 |
| FAMILY MEMBERS PAYING HALF DUES | 2,651 |